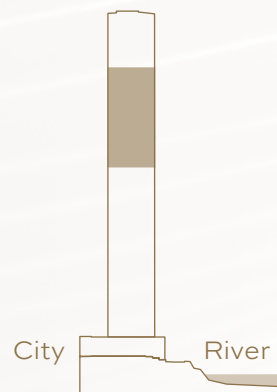
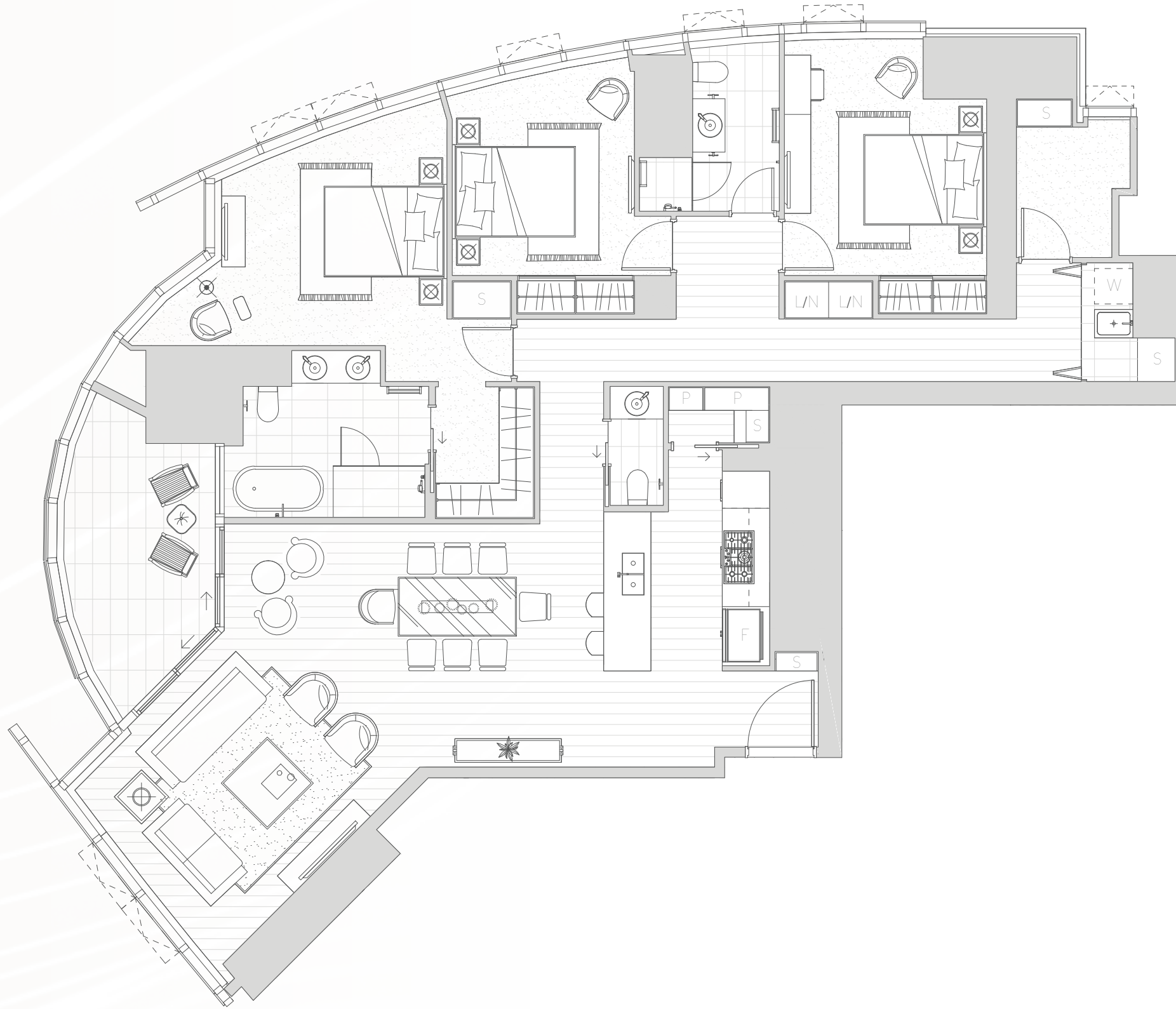
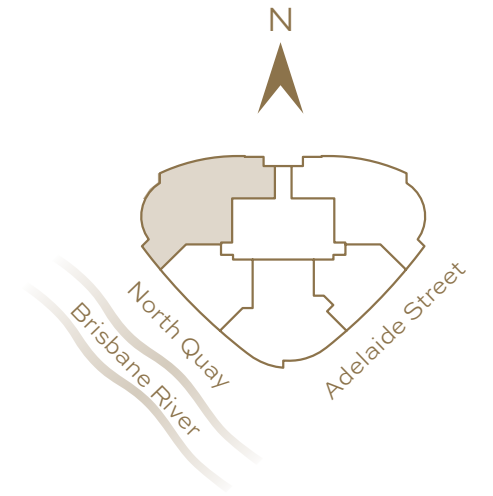


3 Bed / 2.5 Bath
Type 01

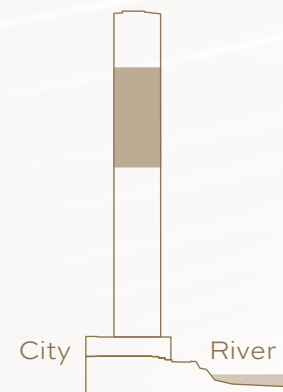
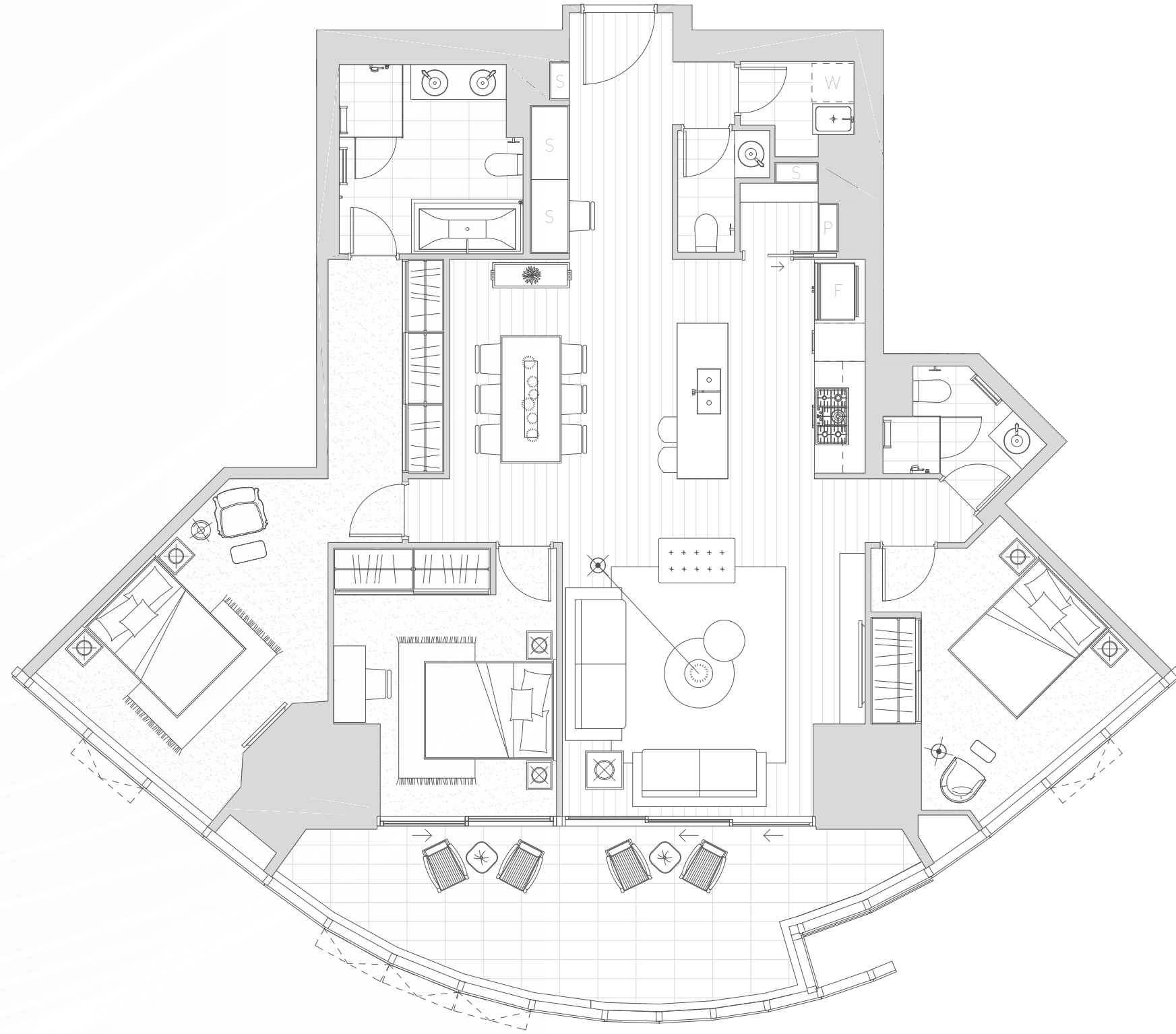
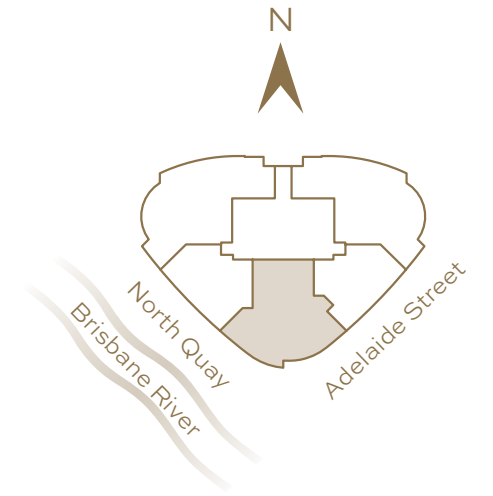


Kitchen	11.3m ²		
Living/Dining	35.6m ²		
Bedroom 1	17.5m ²	Internal Area	168m ²
Bedroom 2	11.5m ²	Internal Area	14m ²
Bedroom 3	12.9m ²	Total Area	182m ²



These plans are provided on an indicative basis and are accurate as at the time of printing. The information they contain is to be used as a guide only. The plans were completed prior to the completion of final design, engineering and construction of the Building, therefore design, engineering, dimensions, fittings, finishes and specifications are subject to change without notice.

3 Bed / 2.5 Bath
Type 03



Kitchen	12.6m ²		
Living/Dining	27.0m ²		
Bedroom 1	15.5m ²	Internal Area	148m ²
Bedroom 2	12.3m ²	Internal Area	22 - 25m ²
Bedroom 3	12.2m ²	Total Area	170 - 173m ²



These plans are provided on an indicative basis and are accurate as at the time of printing. The information they contain is to be used as a guide only. The plans were completed prior to the completion of final design, engineering and construction of the Building, therefore design, engineering, dimensions, fittings, finishes and specifications are subject to change without notice.